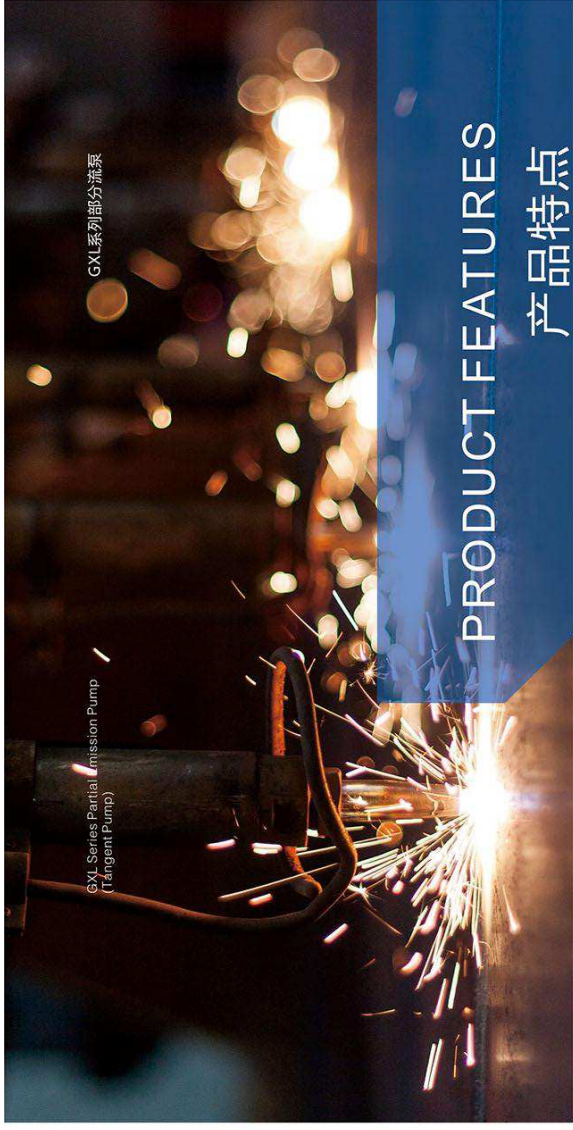
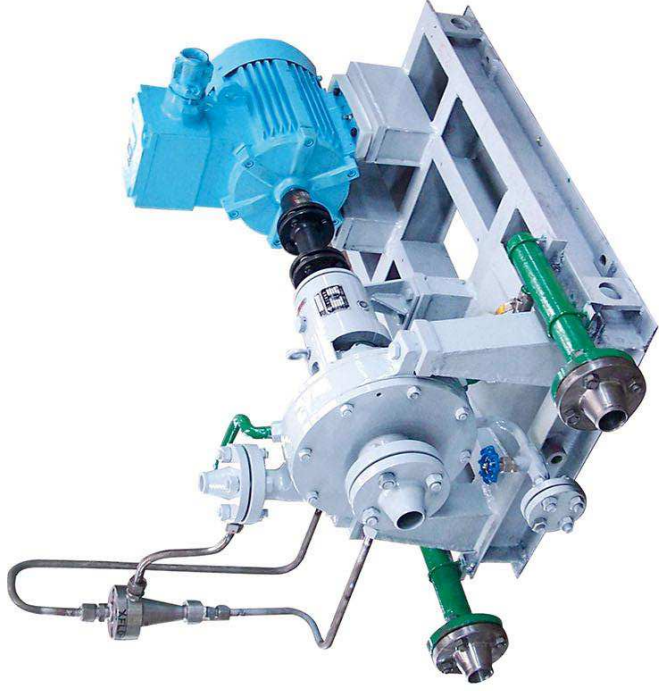


GXL SERIES PARTIAL EMISSION PUMP (TANGENT PUMP) GXL系列部分流泵

GXL系列泵属于小流量、高扬程部分流泵，是针对在小流量、高扬程情况下，正常离心泵的应用受到限制的情况而开发的，该系列泵吸收了国内外同类泵的优点，同时采用了国内全新的设计开发出来的泵系列。

GXL series pump is a partial emission pump with small capacity and high head. For small capacity and high head, the application of a normal centrifugal pump is restricted. The pump is developed by introducing the advantages of foreign similar products and domestic new design.



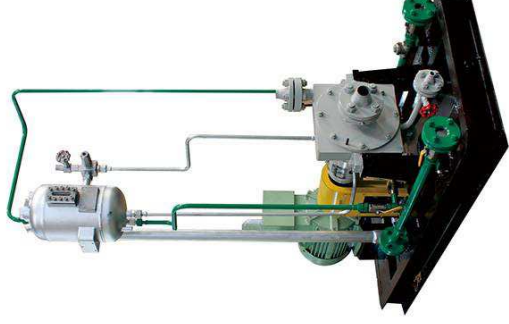
GXL Series Partial Emission Pump (Tangent Pump)

GXL系列部分流泵

PRODUCT FEATURES 产品特点

产品适用范围 | THE SCOPE OF PRODUCTS

- 石油开采
- 地热天然气
- 石油化工
- 污染处理
- 造纸制浆
- 电力
- 煤炭矿山
- 航天、航空
- 汽车制造
- 饮料食品、农药、医药
- Oil exploration
- Geothermal sources or natural gas
- Petroleum and chemistry
- Pollution treatment
- Paper and pulp
- Electric power
- Coal and mine
- Aerospace
- Automobile manufacturing
- Drink and food, agricultural chemicals and medicine





主要零件材质 | MATERIALS OF MAIN PARTS

名称 Name	材料等级 Material Class							
	S-4	S-5	S-6	C-6	A-7	A-8		
泵体 Pump Casing	16Mn	16Mn	16Mn	1Cr13	0Cr18Ni9	0Cr17Ni2Mo2		
前泵盖 Front Pump Cover	16Mn	16Mn	16Mn	1Cr13	0Cr18Ni9	0Cr17Ni2Mo2		
后泵盖 Back Pump Cover	16Mn	16Mn	16Mn	1Cr13	0Cr18Ni9	0Cr17Ni2Mo2		
叶轮 Impeller	ZG230-450	ZG230-450	ZG230-450	ZG1Cr13Ni	ZG6Cr18Ni9	ZG6Cr17Ni12Mo2		
轴 Shaft	42CrMo	42CrMo	42CrMo/3Cr13	3Cr13	3Cr13	3Cr13		

性能参数 | PERFORMANCE PARAMETERS

型号 Type	GXL30-225
流量 Flow Rate	0.4-6.3m ³ /h
扬程 Head	15-130m
工作温度 Operating Temperature	-40-400°C
压力等级 Pressure	2.5MPa
转速 Speed	2950r/min
型号意义 Designation of Pump Sizes	GXL30-225

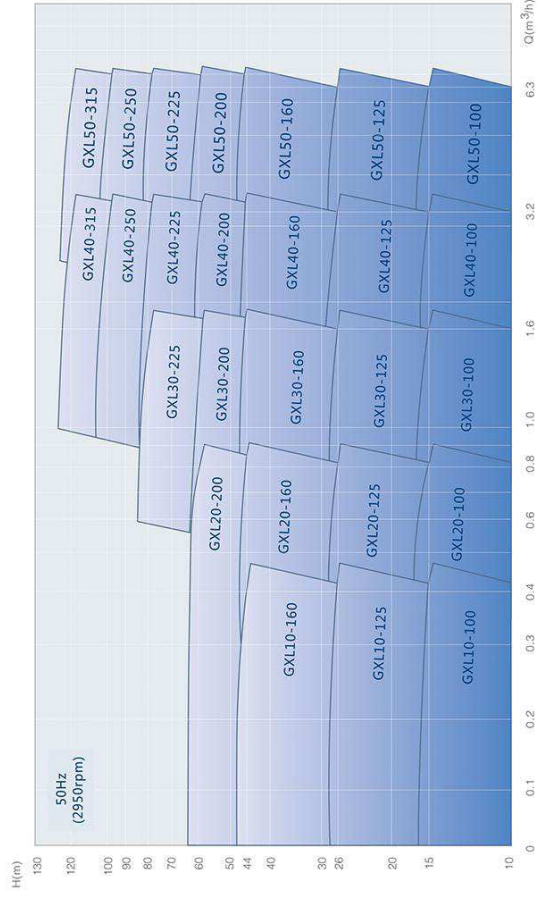
小流量高扬程部分流泵
Partial emission pump with small
capacity and high head

30-Flow grade 30-流量等级代号
10-0.4m³/h, 20-0.8m³/h, 30-1.6m³/h
40-3.2m³/h, 50-6.3m³/h

225-叶轮名义直径(mm)
225-Nominal diameter of impeller

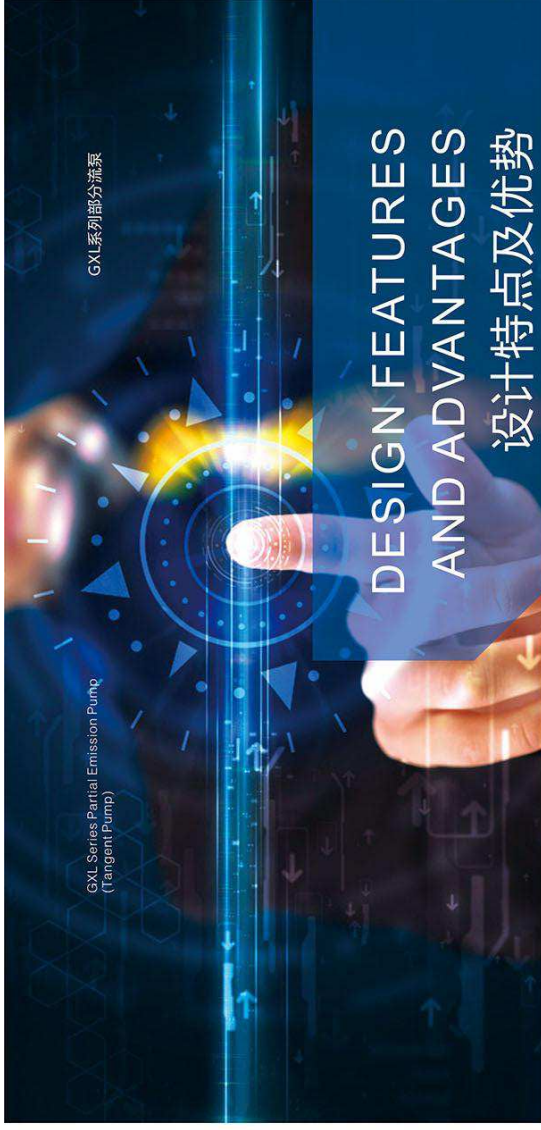


性能型谱 | PERFORMANCE SPECTRUM



性能表 | PERFORMANCE LIST

泵型号 Pump Model	流量 m³/h Flow	扬程 m head	转速 r/min Speed	效率 η(%) Efficiency	功率 (kW) Power		气蚀余量 NPSHr(m)
					轴功率 Shaft Power	电机功率 Motor Power	
GXL10-100	0.4	15	2950	18	0.1	1.1	1.6
GXL10-125	0.4	26	2950	13	0.2	1.5	1.6
GXL10-160	0.4	44	2950	8	0.6	2.2	1.6
GXL20-100	0.8	15	2950	27	0.1	1.1	2.0
GXL20-125	0.8	26	2950	18	0.3	1.5	2.0
GXL20-160	0.8	44	2950	9	1.1	3.0	2.0
GXL20-200	0.8	60	2950	6	2.2	5.5	2.0
GXL30-100	1.6	15	2950	25	0.3	1.5	2.4
GXL30-125	1.6	26	2950	20	0.6	1.5	2.4
GXL30-160	1.6	44	2950	16	1.2	3.0	2.4
GXL30-200	1.6	60	2950	10	2.6	5.5	2.4
GXL30-225	1.6	80	2950	8	4.4	7.5	2.4
GXL40-100	3.2	15	2950	35	0.4	1.5	3.0
GXL40-125	3.2	26	2950	28	0.9	2.2	3.0
GXL40-160	3.2	44	2950	22	1.7	3.0	3.0
GXL40-200	3.2	60	2950	18	2.9	5.5	3.0
GXL40-225	3.2	80	2950	15	4.6	7.5	3.0
GXL40-250	3.2	100	2950	12	7.3	11	3.0
GXL40-315	3.2	130	2950	8	14.2	18.5	3.0
GXL50-100	6.3	15	2950	52	1.7	3.0	3.5
GXL50-125	6.3	26	2950	47	0.9	2.2	3.5
GXL50-160	6.3	44	2950	38	2.0	4.0	3.5
GXL50-200	6.3	60	2950	30	3.4	5.5	3.5
GXL50-225	6.3	80	2950	22	6.2	7.5	3.5
GXL50-250	6.3	100	2950	20	8.6	11	3.5
GXL50-315	6.3	130	2950	15	14.9	18.5	3.5



DESIGN FEATURES AND ADVANTAGES

设计特点及优势

GXL系列部分流泵是卧式、单级、单吸悬臂、径向剖分、泵体为中支撑，前后开门结构。叶轮为放射状，出口安放角90度属于部分流泵，也可称为切线泵。

该系列泵水力型谱覆盖范围广、规格多，采用特殊设计方法在小流量、高扬程工况下运行时，效率比其它同类型泵高。

该系列泵为水平轴向吸入，竖直切线方向吐出，全系列泵的吸入口径和吐出口径只有一个规格，两种规格的轴承体，零部件通用化程度非常高。

转子与定子间隙调节

GXL系列部分流泵转子与定子轴向位置是可调的，可通过轴承体上的调整螺钉来调整叶轮与前、后泵盖的间隙的大小，从而有效的保证了泵性能要求。前、后泵盖表面经过特殊的热处理工艺，可以保证在泵的运行周期内高效平稳稳定的运行。

GXL series partial emission pump is a horizontal, single stage, single suction, cantilever, radially split, centerline mounted pump. Impeller has radial vanes. Its outlet angel is 90 degree. The partial emission pump can also be known as tangent pump.

The pump has the advantages of wide range of hydraulic spectrum and various sizes. By special design methods, the pump has higher efficiency than other similar products at small capacity and high head.

The pump has the structures of horizontally axial suction and vertically tangent discharge. The pump only has one size for suction diameter and discharge diameter, and two bearing frames. so, its parts have high interchangeability.

Clearance Adjustment of Rotor and Stator

The axial position of rotor and stator is adjustable. The clearance among impeller, front and rear pump covers can be adjusted by screws on the bearing, so as to effectively guarantee the performance of pump. Special heat treatment process has been done for the surface of front and rear pump covers so that the pump can operate effectively and stably during the whole operating period.

CROSS SECTION DRAWING OF GXL SERIES PARTIAL EMISSION PUMP

